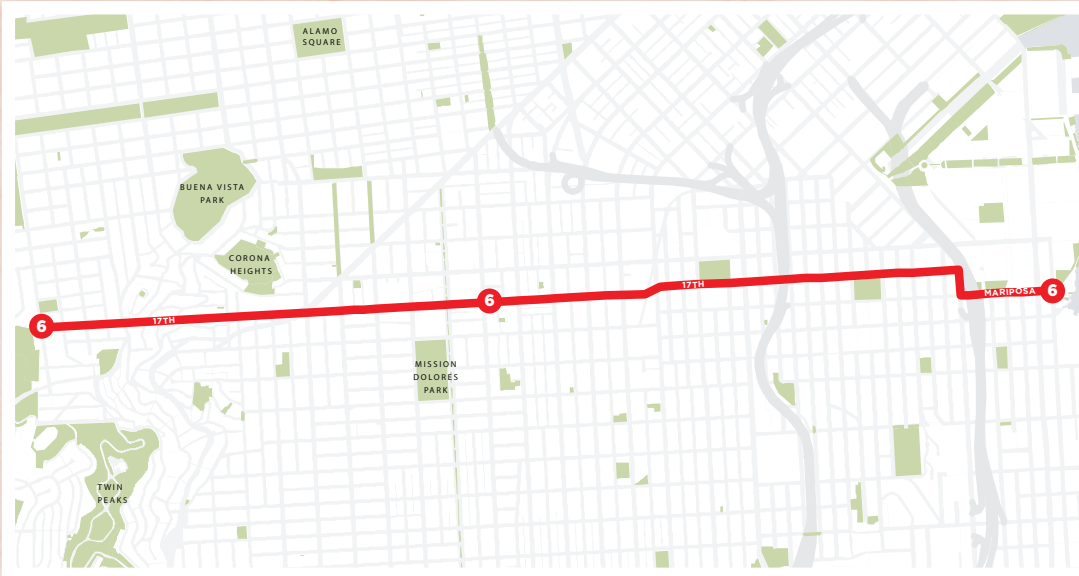


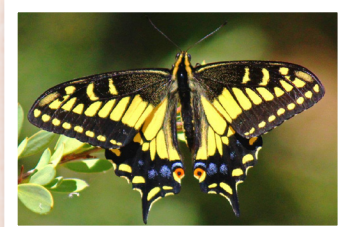
MISSION TO PEAKS

SPECIES: ANISE SWALLOWTAIL



ROUTE HIGHLIGHTS

- » The Castro, The Mission, Potrero Hill, Mission Bay, Jackson Playground, Franklin Square, Mount Sutro Open Space Preserve, The Blue Greenway



Credit: Vivian Reed

ANISE SWALLOWTAIL – *Papilio zelicaon*

Flying giants!

The Anise Swallowtail is one of the three biggest San Francisco butterflies! The others, the Western Tiger Swallowtail and the Pipevine Swallowtail, can be identified with a simple trick. Anise Swallowtails have black 'shoulders', Western Tiger Swallowtails have black tiger stripes, and Pipevine Swallowtails can vary in color from slate grey brown to rich shiny blue black. Anise Swallowtail females lay eggs on plants in the carrot family (*Apiaceae*) which include Anise, Parsley, Fennel, and Dill. When the egg hatches, the 1st instar (first larval stage) turns around and eats its own eggshell! During later instars, caterpillars feeling threatened may react by deploying a bright red, antennae-like scent gland (*osmeterium*) that emanates a strong anise-flavored odor intended to scare off predators. In San Francisco, the Anise Swallowtail is plentiful! During San Francisco's 17th Annual Butterfly Count on July 3, 2011, observers counted a record number of Anise Swallowtails at 110 individuals counted. In his field notes, lepidopterist Liam O'Brien notes: "New high [for the] count. With 44 hills and fennel in every vacant lot in this city, this record number makes perfect sense."

RESIDENT OR MIGRATORY

Resident

KEY HABITAT FEATURES

Fairly open country, and most likely to be seen on bare hills or mountains, in fields or at the roadside. It is often seen in towns, in gardens or vacant lots.

DIET

Nectar Plants: *Zinnia*, *Aster*, *Butterfly Bush*. Host Plants: *Dill*, *Fennel*, *Parsley*, *Queen Anne's Lace*.

ASSOCIATED PLANTS & ANIMALS

Wild Aster – *Symphyotrichum chilense*, *Holly leaf (Islais) Cherry* – *Prunus illicifolia*, *Yarrow* – *Achillea millefolium*, *Cow Parsnip* – *Heracleum maximum*.

NESTING INFORMATION

Eggs are laid singly, on the undersides of leaves.

ADDITIONAL HABITAT PLANTS

Anise, *Caraway*, *Carrot*, *Citrus*, *Dill*, *Fennel* family including *Common*, *Sweet*, *Lomatium*, *Yampah*, *Lovage*, *Parsley*, *Parsnip*, *Queen Anne's Lace*, *Rue*.